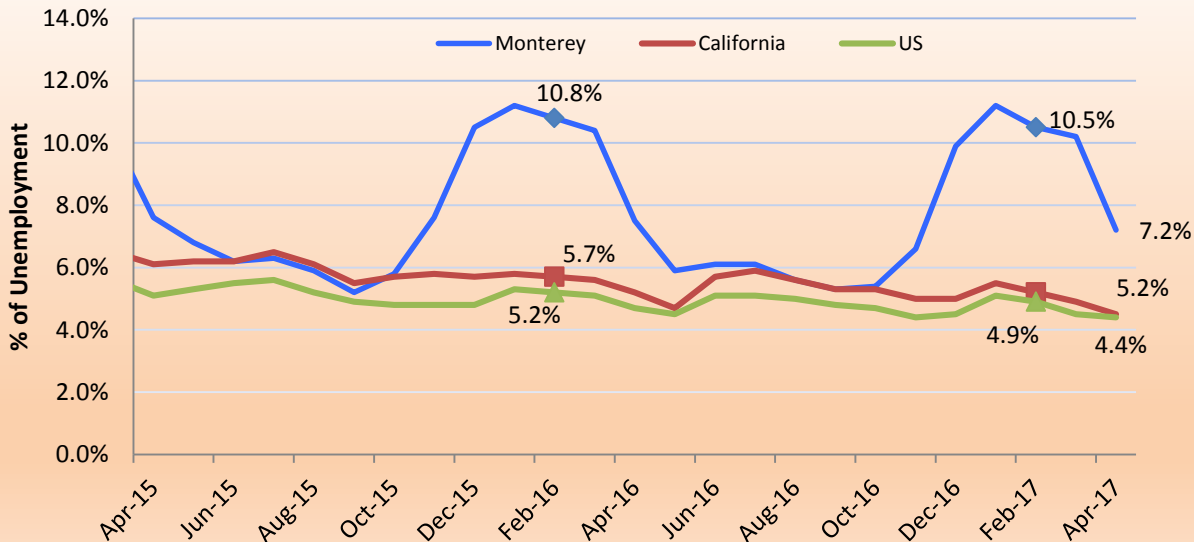


Employment Summary

Monthly Unemployment Rate Trends - April 2015 to April 2017



Leisure and Hospitality led year-over job changes

The unemployment rate in Monterey County was 7.2 percent (15,900 unemployed) in April 2017, down from a revised 10.2 percent in March 2017, and below the year-ago estimate of 7.6 percent. This compares with an unadjusted unemployment rate of 4.5 percent for California and 4.1 percent for the nation during the same period.

Month to Month

Between March 2017 and April 2017, employment in Farm (Ag) gained 15,000 jobs, due to seasonal hiring.

- Educational and Health Services Jobs increased by 100 jobs.
- Leisure and Hospitality had a gain of 400 Jobs.

Annual

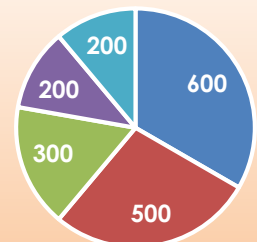
Between April 2016 and April 2017, total employment in Monterey County, grew by 1400 jobs.

- Leisure and Hospitality led the year-over job changes, advancing by 600 jobs.
- Food services and drinking places accounted for fifty-percent of that increase.



Sectors Year to Date # of Jobs Gain

- Leisure and Hospitality
- Educational and Health Serv.
- Transportation and Utilities
- Construction

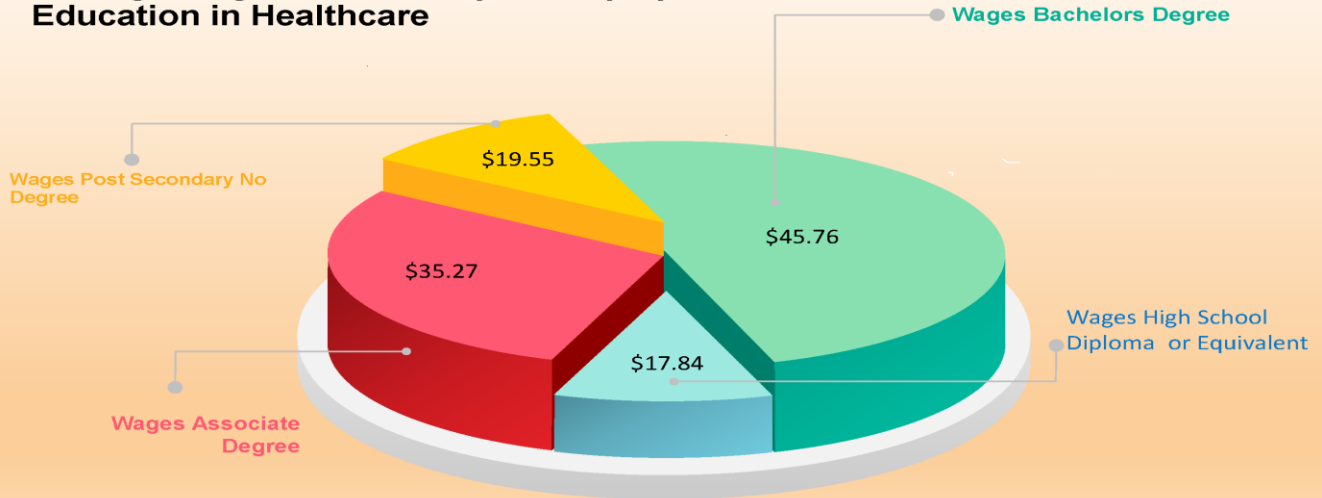


MONTEREY COUNTY LABOR MARKET SNAPSHOT

April 2017

Sectors and Occupation Summary

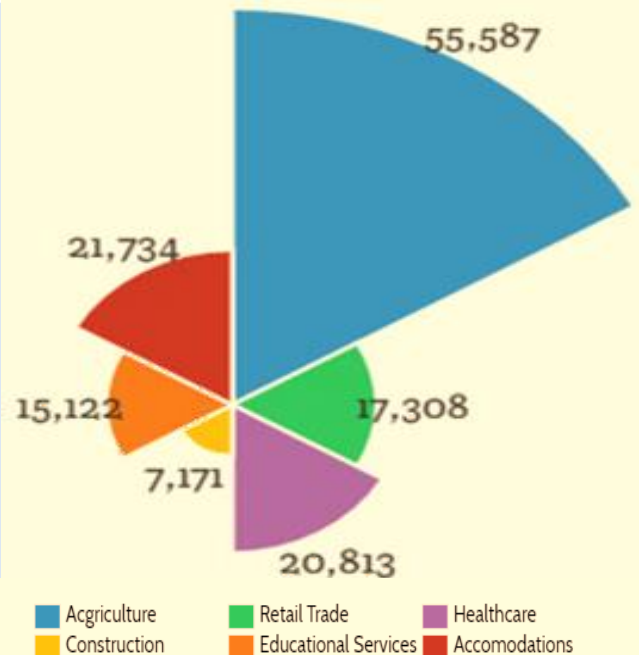
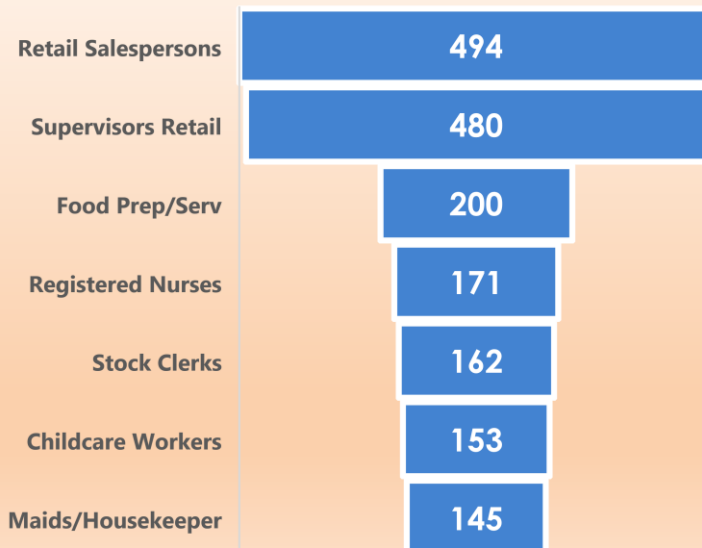
Average Wages in Monterey County by Education in Healthcare



The Health Care sector combines technology and human touch to care for patients. It comprises ambulatory, hospital and long-term care services as well as social and laboratory work.

Job Postings and Priority Sector Employment

Top 7 Current Job Postings



Source: JobsEQ
Employment data is from Bureau of Labor Statistics, updated 2017Q1

MONTEREY COUNTY LABOR MARKET SNAPSHOT

April 2017

Sector News



How Big Data And Tech Will Improve Agriculture, From Farm To Table

There's nothing more important than our food supply. America is a country synonymous with wheat farms and orange trees. But according to McKinsey & Company, about a third of food produced is lost or wasted every year. Globally, that's a \$940 Billion hit. Inefficiencies in planting, harvesting, water use and trucking, as well as, uncertainty about weather, pests, consumer demand and other intangibles contribute to the loss.

On the consumer end, inadequate packaging and labeling can lead to waste and potentially life-threatening illness due to foodborne pathogens. These are problems desperately in need of solutions and many of those solutions can be found in emerging technologies. Big data is moving into agriculture in a big way. Need proof? Several well-known investors recently dropped a combined \$40 million into Farmers Business Network, a data analytics startup. Venture capital has flooded the ag tech space, with investment increasing 80% annually since 2012, as investors realize big data can revolutionize the food chain from farm to table.

For the rest of the article follow the following link: <https://www.forbes.com/sites/timsparapani/2017/03/23/how-big-data-and-tech-will-improve-agriculture-from-farm-to-table> **Tim Sparapani** Contributor
www.forbes.com.

AGRICULTURE EMPLOYMENT 7 YEAR TREND



Sources: JobsEQ April 2017



18%
increase
in jobs
2011-2017